

# GREEN FOREST

Sumitomo Forestry Group News Letter



## Introducing a Landscaping Company in Australia



### Business Outline of Regal Innovations Pty Ltd

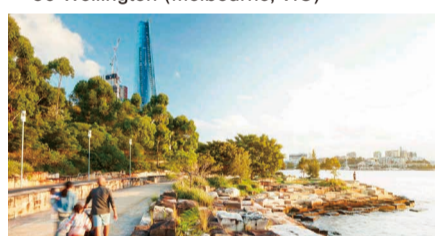
Based in New South Wales, Australia, Regal has been involved in the design and construction of commercial facility exteriors and green zones in residential development areas, including public spaces such as parks and plazas. Regal handles a wide variety of construction work, from planting and stone masonry to brick paving, pouring, and the construction of amenity facilities. Based on this construction know-how, Regal excels in creating landscapes harmonized with nature and has also undertaken development and construction that represent the

city in central Sydney's Barangaroo, Darling Harbour precincts and the capital Canberra. The Drying Green, an urban park in the redevelopment area of Sydney for which Regal undertook the entire project from design to construction and post-completion maintenance, won the 2023 Australian Good Design Gold Award. Since joining the Sumitomo Forestry Group in May 2022, Regal has expanded its business areas beyond New South Wales into Victoria and Queensland, engaging in Nature-Based Solutions, which utilize nature to solve environmental issues and ensure biodiversity. They also aim to

enhance their business by strengthening their collaboration with Sumitomo Forestry Landscaping Co., Ltd., which is involved in the landscape business in Japan.



■ 36 Wellington (Melbourne, VIC)



■ Barangaroo precinct park area (Sydney, NSW)



■ City Park (Penrith, NSW)

### Business Development Areas



#### Basic Data

- **Headquarters** : Mulgrave, New South Wales, Australia
- **Representative** : Robert Stanton (Managing Director)
- **Employees** : 93 (as of December 2023)
- **Established** : 1971
- **Business** : Landscaping business, primarily in New South Wales

### Sumitomo Forestry Group Awarded its First Australian Good Design Award, Gold Winner!

Regal has been awarded the Australian Good Design Award, Gold Winner, for the design and construction of The Drying Green, an urban park in Sydney, New South Wales. In addition to the park's design, the park was highly rated for its environmentally conscious use of technology such as solar panel power generation and rainwater circulation systems, as well as the design company's design proposal and construction skills, which gave shape to the basic design.

\*Press release on the award:

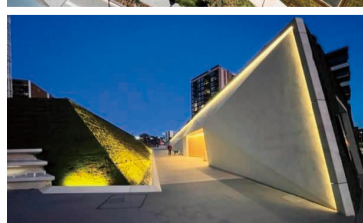
[https://sfc.jp/english/news/pdf/20231030\\_01.pdf](https://sfc.jp/english/news/pdf/20231030_01.pdf)

The three-dimensional topography of mountains and valleys blocks views and noise from outside the park, offering visitors a space of comfort.

The grassy areas are designed to capture the warm winter sunlight and the wall greening using slopes creates a green space in the city.

See here for details on The Drying Green!

<https://www.regalinnovations.com.au/completed-projects/drying-green-nsw>



### Message from Top Management

On behalf of Regal Innovations, it's an honour to be part of the Sumitomo Forestry team and provide a feature about our business. Over the years, Regal Innovations has become known for delivering landscape and civil projects on time and within budget, thanks to our innovative solutions. Our partnership with Sumitomo Forestry Australia is founded on shared values, focusing on improving the planet's health and enhancing lives. In design and construction, we seamlessly blend the best of both worlds to deliver outstanding results that respect the design intent. Our services cover green and blue infrastructure, urban ecology, bush regeneration, heritage, and cultural works, including the restoration of heritage sites. Maintaining the legacy and integrity of our completed projects is a core value at Regal Innovations. As individuals comprising Regal Innovations, we have all been drawn to this industry that

revolves around people, places, and nature. We have discovered a workplace where we can uphold our shared values and live by our core foundation values together. Our journey continues with Sumitomo Forestry Australia. This exciting chapter strengthens our vision and expertise, propelling us forward to shape even more remarkable public spaces for generations to come. We're honoured to be featured alongside outstanding businesses in the Sumitomo Group's portfolio. Thanks for this recognition.

**Robert Stanton**  
Managing Director



## Introducing Lifestyle Services Business in Japan

# Sumirin Fill Care Co., Ltd.



### Basic Data

- **Established** : 2004
- **Headquarters** : Shinjuku-ku, Tokyo
- **Representative** : Tadasu Fukunaga
- **Employees** : 581
- **Operating facilities** : 17 private elderly care facilities, 3 day care facilities for the elderly

### Business Outline of Sumirin Fill Care

In Japan, the ratio of people over 65 is expected to be approximately 35% of the entire population by 2040, and that of people over 75 is expected to reach roughly 20%\*. In this rapidly aging society, there is an increased demand for senior support services.

Sumirin Fill Care runs midsize nursing care

facilities with around 50 rooms dedicated to those in need. The facilities offer services such as rehabilitation and daily support in matters like taking meals and baths. Here we would like to share the details of the facilities operated by the company.

\*Source: Cabinet Office, Annual Report on the Ageing Society

#### Point. 1 Use of advanced ICT

The facilities have implemented information and communication technology (ICT) including devices to check on residents, a system that supports their health using sleep data, and a medicine-taking management system to prevent human errors.



#### Point. 2 Original rehabilitation service "Forest Life"

Sumirin Fill Care has established rehabilitation and recreation programs according to the preferences and circumstances of each resident. The company offers exercises, brain training, programs to spend time in nature, and environments in which residents can take on challenges doing something they are good at.



#### Point. 3 High-quality wooden spaces

Wood is said to have the effect of relieving stress and relaxing the mind. As a member of the Sumitomo Forestry Group, which has a full understanding of the benefits of wood, Sumirin Fill Care offers high-quality spaces using a large degree of wood.



### Topics

## Private Nursing Home "Gran Forest Den-en-chofu" Opens

Gran Forest Den-en-chofu, a private nursing home operated by Sumirin Fill Care Co., Ltd., opened in October 2023. The five-story building has a reinforced concrete (RC) structure and 78 nursing care rooms. Care staff members are stationed 24 hours a day, and all rooms are

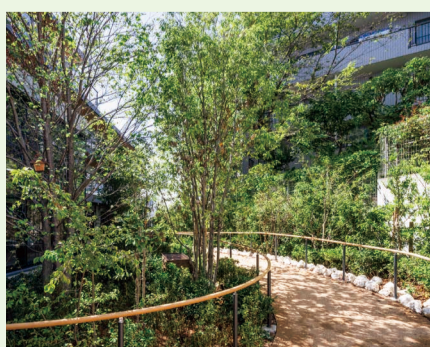
equipped with Life Rhythm Navi Plus Doctor, a sensor that detects the residents' movement when they get up from bed. This can help prevent residents in need of nursing care from nightwalking or getting injured when they get up.



■ External view



■ Wooden floor materials of Sumitomo Forestry Crest Co., Ltd. with very few grooves to prevent tripping and falling



■ Exterior landscaping by Sumitomo Forestry Landscaping Co., Ltd. with nest boxes to make it friendly to flora and fauna



### Message from Top Management

In recent years, we have focused on improving the occupancy rate of existing facilities, but now that we are seeing stability in occupancy, we hope to increase facilities by building new ones as well as through M&As, aiming to expand the scale of our business and stabilize revenue. Moreover, we are considering offering medical services as well. We hope to respond to the diverse needs of residents, such as by sharing nursing logs and electronic medical records online with medical institutions and offering medical services such as home-visit nursing care.



**Tadasu Fukunaga**  
Representative Director and President

## Aiming to Contribute to a Decarbonized Society through Net Zero Carbon Buildings

Completion Ceremony Held for 15-story Timber Office Building, which is the Tallest Timber Building in Melbourne, Australia

Sumitomo Forestry, NTT Urban Development Corporation, and Hines, a leading global developer, have completed the construction of "T3 Collingwood," a 15-story timber office building developed in Melbourne, Australia, on October 6. A completion ceremony was held on Tuesday, November 28. A total of about 80 people attended, mostly project members.



### Building Exterior Images

T3 Collingwood is a hybrid structure of RC and timber with 15 floors above ground and two basements (The 7th to 15th floors are timber). It is the tallest\*<sup>1</sup> timber office building in Melbourne.

Through this property, in addition to achieving the highest level of Green Star environmental certification in Australia (6 stars), we aim to achieve Net Zero Carbon certification based on the Carbon Neutral Standard for Buildings, an Australian standard.

Approximately 3,200 m<sup>3</sup> of timber was used in the structural frame, sequestering approximately 2,300 tonnes of carbon. Including this sequestered carbon, the CO<sub>2</sub> (Embodied Carbon) emitted during the construction of the building is expected to be approximately 40% less than if the entire structure had been made of RC.

The project also adopts a biophilic design, which incorporates materials derived from nature such as

timber and plants and is believed to be effective in reducing stress and improving productivity\*<sup>2</sup>. Beams and columns are exposed, allowing visitors to experience the atmosphere and warmth of timber. This project will be an opportunity to promote medium- to large-scale timber constructions with low environmental impact in Australia.

\*<sup>1</sup> Based on research by Wood Solutions, an organization affiliated with the Australian government (as of November 2023)

\*<sup>2</sup> Based on research by Pollinate, an Australian research institute



Image by Ned Meldrum



Image by Ned Meldrum



Image by Glenn Hester

## Joint Development of a Multi-family Rental Building near Washington, DC

Sumitomo Forestry, Tokyo Tatemono Co., Ltd., and Chuo-Nittochi Co., Ltd. are pleased to announce that they will develop an eight-floor, 400-unit multi-family residential rental building in the suburbs of Washington, DC (USA). In addition to these three Japanese companies, major US developer Fairfield Residential Company LLC will also participate in this joint development.



### Property overview

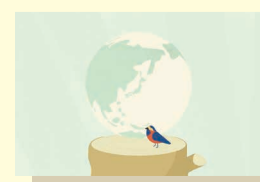
**Name:** 555 Herndon Parkway  
**Location:** 555 Herndon Parkway  
Herndon, VA 20170  
**Units:** 400

The building is a hybrid structure with three lower floors made of reinforced concrete (RC) and five upper floors made of wood. It contributes to a decarbonized society by using a large amount of wood that fixes carbon. Redevelopment of the area has been underway since the Herndon Metrorail Station opened in November 2022. With offices of major US companies located within a 10 km radius, ongoing housing demand is expected to remain solid.



### Completion of Corporate Story Video Introducing Sumitomo Forestry Group Companies

Sumitomo Forestry Group has completed a corporate story video. The 4-minute video presents a compact overview of the company's history and the group's business centered on wood, from forest management to distribution, wooden construction, and biomass power generation. Please take a look.



**i**  
Video Introducing  
Sumitomo Forestry Group



<https://bcove.video/3TRW19G>