

PT. Rimba Partikel Indonesia



High Quality Particle Board
& Melamine Faced Chipboard



Group photo of RPI employees



Exterior of RPI's factory

Basic Data

Trade name: PT. Rimba Partikel Indonesia
Representative: Tomofumi Takano (President Director)
Head office: Desa Mororejo, Kaliwungu, Kendal, Central Jawa PO BOX 127 Kendal Indonesia
Established: 1990
Business: Manufacturing and sale of particle boards and MFC
Number of employees: 407 (as of January 1, 2024)

Business outline

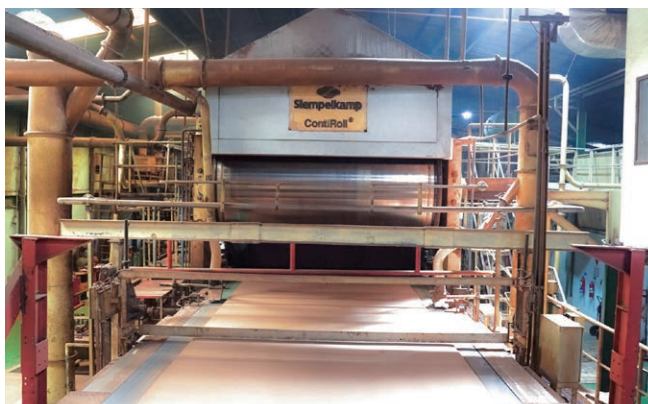
- PT Rimba Partikel Indonesia (RPI) is a company engaged in the manufacturing and sale of particle boards and melamine faced chipboards (MFC).
- RPI manufactures products using waste wood generated locally and sells the products to furniture factories in Indonesia. Exports to China, Japan, and other destinations make up approximately 15% of the sales volume.
- The company also operates an in-house forestry business aimed at securing wood raw materials, thereby also contributing to the creation of employment opportunities in the local community.

- RPI's products fulfill high quality standards, and have been certified based on Japanese Industrial Standards (JIS), CARB-P2, and US-EPA, to name a few.
- RPI's factory commenced operations in 1992. At the time, it was the first factory in Asia to introduce a German-made continuous press (ContiRoll press), and it has maintained this high quality for over 30 years.

For details, please visit the company's official website.



MFC sales promotion activities at a fair in Jakarta



ContiRoll press



RPI's forestland

Particle boards

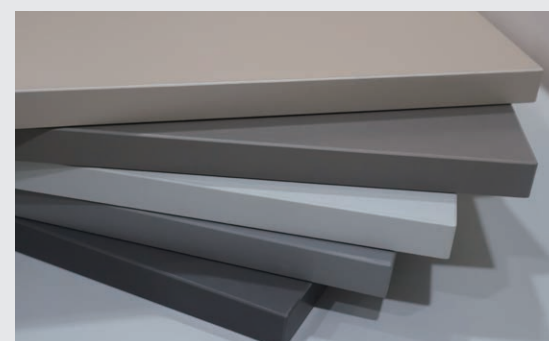
- RPI's particle boards are highly rated for its smooth surface and stable product quality, and are used widely in furniture and interior products.

Melamine faced chipboards (MFC)

- MFC is characterized by its durability and its superior, beautiful finish. It is widely known as a material suitable for home and office furniture as well as interior design.



Particle boards



Melamine faced chipboards (MFC)

Message from the President Director

RPI prioritizes customer satisfaction in its existing particle board business, and is advancing a marketing strategy aimed at expanding the sale of products with high added value. It will also continue to work on cost reduction. In the new melamine faced chipboards (MFC) business, it will work to increase awareness in the Indonesian market and undertake capital investments toward increasing sales in the future. RPI aims to improve quality, and to continue to be a company that can achieve sustainable growth and contribute to the local community.



Tomofumi Takano

TOPICS

RPI has commenced production of melamine faced chipboards (MFC)

MFC is a latecomer to the Indonesian market, and both the product and its processing methods have not yet become widespread. With expectations of an increase in demand for products made from MFC on the back of future economic growth, RPI commenced production of MFC in 2019 as a new business.

Strengthening of social media-driven marketing

RPI has established a dedicated IT team to boost customer awareness when introducing new products such as melamine faced chipboards (MFC) to the market. The team uses social media tools such as Instagram to effectively disseminate new product information. It aims to expand the company's presence in the industry and increase sales both domestically and overseas.

For details, please check the official Instagram account.

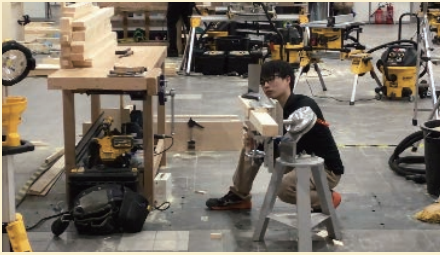


Achievements of technical specialists from Sumitomo Forestry Home Engineering Co., Ltd.

Technical specialists from Sumitomo Forestry Home Engineering Co., Ltd.*¹ who have graduated from the Sumitomo Forestry School of Professional Building Techniques*² have successfully passed the preliminary round of the National Skills Competition of the WorldSkills Competition, demonstrating their skills in the Carpentry and Plastering Categories.

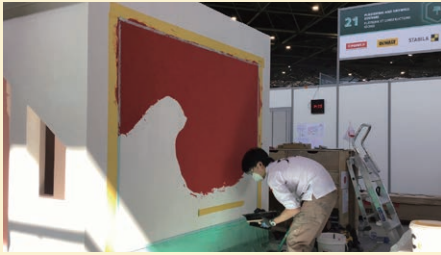
Carpenters

Refers to craftspeople responsible mainly for the construction and repair of wooden constructions. They are artisans who carry out marking*³, processing, construction, etc.



Plasterers

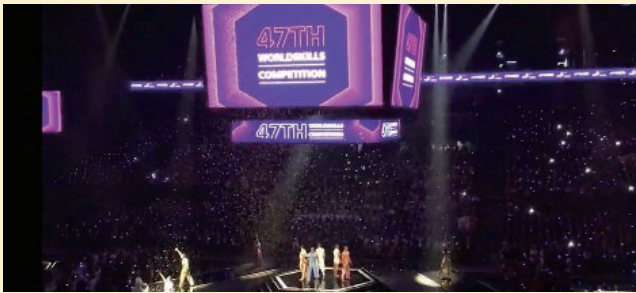
Refers to craftspeople responsible for painting the finish on building walls, floors, and ceilings. They play a role in enhancing the decoration, durability, and functionality of buildings.



*1: A Sumitomo Forestry Group company that handles all types of wood-related constructions, including Sumitomo Forestry homes, medium- to large-scale wooden constructions, renovations of detached houses and apartments, and the restoration of traditional buildings.
*2: An in-house vocational training school established in 1988 with investment from the Sumitomo Forestry Group, with the aim of training craftspeople who will work on the construction of Sumitomo Forestry homes.
*3: To mark a piece of wood for processing.

47th WorldSkills Competition held

The 47th WorldSkills Competition was held in Lyon, France, from September 10 to 15, 2024. Sumitomo Forestry Group sent out two representatives who qualified for this competition after achieving outstanding results at the 61st National Skills Competition in Japan held in November 2023.



Scene from the Opening Ceremony

Carpentry competition

Participants are required to prepare a full-scale drawing and carry out marking, processing, and assembly of the materials. The construction is required to be of a size that fits a child inside. The details of the task are only announced on the day of the competition, so precision and adaptability are required.



Plastering competition

Participants complete tasks based on the interior walls of European architecture. They compete on aspects such as the accuracy of assembly, the aesthetic features of the painted finish, and the speed of work, with consideration given to work efficiency and the finished product.

Congratulations to the Medallion for Excellence winner!
(7th place out of 13 participants)



Carpentry Category: Masataka Urayama

Although I received the Medallion for Excellence in this competition, I am still not satisfied with the result. I will use this disappointment as a springboard for improvement, and continue to work hard on work sites. Thank you for your support!

Congratulations to Sumitomo Forestry Group's first participant in the Plastering Category! (8th place out of 13 participants)



Plastering Category: Ryuku Yamasaki

Although I am very disappointed that I did not receive any awards in the competition, I still gained much from the experience. I would like to share this with those who come after me, and I will work hard to further promote Japanese plastering!

62nd National Skills Competition of Japan held

The 62nd National Skills Competition was held in Aichi Prefecture, Japan from November 22 to 25, 2024. 11 technical specialists from Sumitomo Forestry Home Engineering Co., Ltd. who had won the local competitions took part in this national competition.

Carpentry competition

Participants are required to produce a "koyagumi" (truss structure) with a roof by following a given design. Changes to the task are only communicated to participants on the morning of the competition, so flexible adaptability is required.



Plastering competition

Following a given drawing, participants are required to complete the lining and molding, finish the thick and thin coatings, and complete the free assignment. It is important to improve precision within the limited time, and to ensure speed and good time management.



Congratulations to the Gold winner!

Carpentry Category: Kaisei Henmi

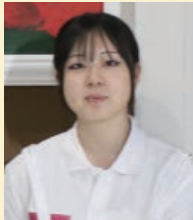
I was disappointed as I made a mistake during the competition last year, but I was able to demonstrate my full capabilities this year and leave without any regrets. I am delighted to have won a medal!



Congratulations to the Silver winner!

Plastering Category: Yuki Shingura

I was so nervous during the competition that I do not remember much of it, but I am glad that my efforts led me successfully to a silver medal. Thank you for your support!



Metricon, Australia’s largest home builder, joins Sumitomo Forestry Group, with the aim of becoming the largest builder group in Australia.

Metricon Group joined Sumitomo Forestry Group in November 2024. Metricon has established a strong brand presence across an extensive area of the east coast of Australia and is expanding its business domain with a wide range of products, from homes suitable for first-time buyers to high-end customers. On December 16, 2024, a ceremony was held at one of Metricon’s displays, and the key members from both companies attended. Metricon’s founder family members, management teams, and executives of Sumitomo Forestry celebrated the new partnership and expressed the desire to achieve further success. The four Sumitomo Forestry group builders in Australia, including Metricon, will continue to provide high quality housing and address Australia’s housing shortage, which is one of the major social issues.



Gifts exchange between SFC and Metricon



Key stakeholders gathered to know each other in the ceremony

Mass timber office in Melbourne, Australia, wins two prestigious architecture awards consecutively

The 36 Wellington Project, a 15-story mass timber office building in Melbourne, Australia developed by Sumitomo Forestry jointly with NTT Urban Development Corporation and major real estate developer Hines, was crowned winner on October 16 in the Commercial Building category of the Timber Design Award 2024, which recognizes outstanding wooden and timber constructions in Australia. On November 7, it also received the top award in the commercial architecture category of the National Architecture Awards 2024, Australia’s most prestigious architecture award.



Posts and beams are made from engineered wood produced locally in Victoria
Cross-laminated timber (CLT) made from Australian radiata pine is used for the floor slabs



Hybrid structure of reinforced concrete (RC) structure from the 1st to 6th floors, and timber structure from the 7th to 15th floors
Tallest completed timber office building in Australia



Timber Design Award ceremony
(Third from left is George, General Manager of Sumitomo Forestry Australia)



With a timber exposed finish that shows off the posts and beams, the interior allows one to experience the atmosphere and warmth of wood

Marking the 20th anniversary of Kikorin’s debut!

Kikorin is the original mascot of Sumitomo Forestry Group.
Do you know these facts about Kikorin?

Kikorin is a tree spirit!
Kikorin appeared 350 million years ago, when forests were first born on the Earth.

Kikorin arrived as if on a time machine!
In 1691 (the year Sumitomo Forestry Group was established), Kikorin traveled through time and space to the forests of Besshi in Ehime Prefecture (the birthplace of Sumitomo Forestry Group). Kikorin sends messages to people through telepathy.

Kikorin’s dream!
Kikorin’s dream is to build happy relationships between the forests, living things, and human beings.

What is Kikorin made of?
Kikorin’s body is made of cypress, while its eyes are shaped like cypress leaves. The three legs represent “environment,” “society,” and “economy.”

kikorin 20th

“75 Years of Sumitomo Forestry” published and launched to the public!

Sumitomo Forestry published “75 Years of Sumitomo Forestry” in October to commemorate the 75th anniversary of its founding. The book covers Sumitomo Forestry’s corporate activities with a focus on the 25-year period from the publication of the “Sumitomo Forestry Corporate History” in 1999 (spanning from the founding of Sumitomo to 1997) until February 2023. The composition consists of two books: “75 Years of Sumitomo Forestry” (commonly known as the official history) and “Stories That Leave a Mark” (a collection of episodes focusing on individuals). The English version is available only for “Stories That Leave a Mark.”



Left: 75 Years of Sumitomo Forestry
Right: “Stories That Leave a Mark”

